



General Plan Advisory Committee

Wednesday, September 14, 2022

Infrastructure & Public Services

Presentation Outline

- » **Project Overview**
- » **Infrastructure & Public Services**
- » **Next Steps**
- » **Public Comments**
- » **GPAC Questions and Feedback**



Project Overview



General Plan Vision

In 2045, Livermore will be a community with a big heart where families and individuals flourish, and people with diverse experiences and perspectives work together for the common good. Insightful land-use policies and wise resource management will ensure services and infrastructure for a high quality of life and enable Livermore to be safe and welcoming for all.

CO PLACEWORKS

General Plan Guiding Principles



Prosperity

Excellent city services and infrastructure support a thriving local economy with a wide spectrum of local jobs including those in science and technology, arts and trades, agriculture, and tourism.



Vibrancy

People enjoy a vibrant downtown, commercial districts, cultural venues, wineries and breweries, and parks throughout the city and surrounding areas to work, shop, dine, and have fun.



Mobility

A wide variety of convenient, comfortable zero-emission modes of transportation and interconnecting routes enable everyone to easily travel to meet their daily needs for work, errands, and play.



Sustainability

We live sustainably to preserve our vital resources, work to clean up our environment, protect open spaces and habitats, and integrate nature into the urban environment.



Resiliency

We prepare for emergencies and a changing climate, help those affected, and ensure the durability of our homes, businesses, and supporting infrastructure, while maintaining sufficient financial reserves.



Homes

Individuals and families of all types and income levels can find diverse housing choices close to jobs, exceptional schools, shopping, entertainment, and well-maintained parks.



Equity

Everyone can easily participate in civic life and have a voice in city decisions. We enable access to services and opportunities and provide for those who have been underserved so that everyone can be healthy and flourish.



Diversity

Neighbors feel connected to each other and their city, welcome and celebrate everyone, and respect differing viewpoints to foster a close-knit community where civic life and opportunity thrive.



Continuity

We honor our complex heritage, which began with the indigenous peoples, who were the original stewards of this land, and followed by the increasingly diverse community that is our future.



Arts

We foster a vibrant and thriving cultural arts community so that the arts, in all their beauty and variety, will enhance the lives of residents and visitors alike.

Land Use Alternatives Evaluation

» Alternatives evaluation will consider:

- Climate change and resilience
- Public safety from flooding and fires
- Equity
- Parks
- Housing supply
- Student generation and school capacity
- Infrastructure capacity
- Open space preservation and biological resources
- Historic resources
- Aesthetics and urban design
- Fiscal impacts
- Transportation impacts

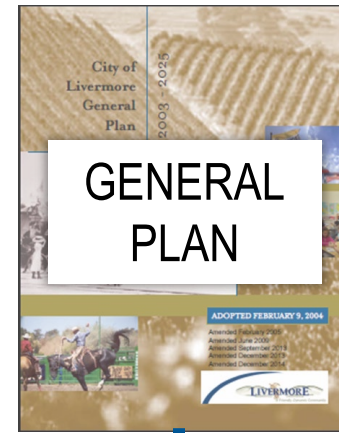
» **No decisions on a preferred land use scenario will be made until evaluation is complete and shared with community**



General Plan Elements

- » Land Use
- » Circulation
- » Housing
- » Open Space and Conservation
- » Noise
- » Public Safety
- » Environmental Justice
- » Community Character
- » Infrastructure and Public Services
- » Economic Development
- » Climate Change

Hierarchy of City Policy Documents




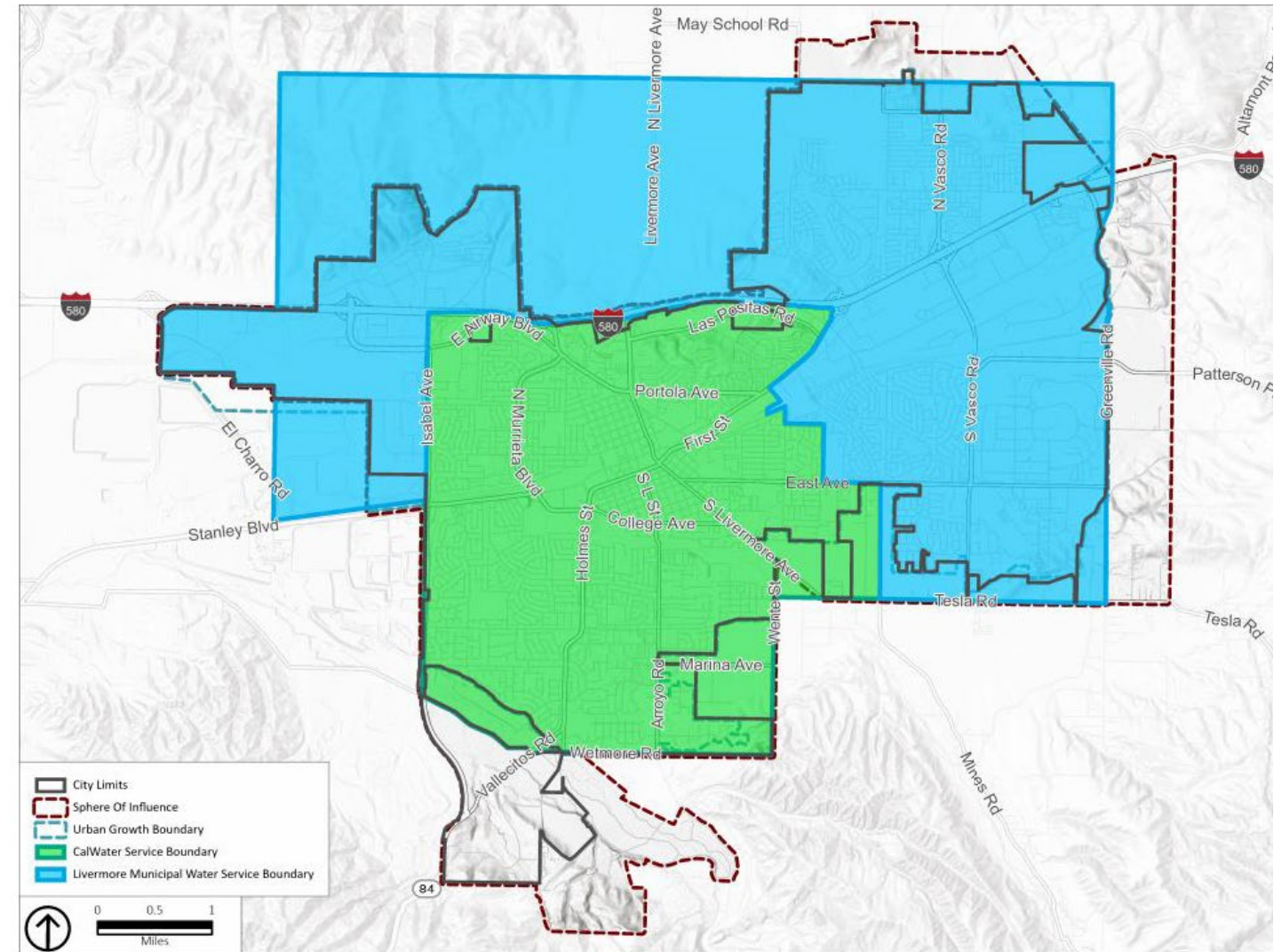
Infrastructure

- » Water Storage and Transmission
- » Wastewater Transmission and Treatment
- » Storm Drainage System
- » Transportation
- » Parks, Plazas and Trails
- » Public Buildings



Water Facilities and Services

- » **Zone 7 Water Agency provides wholesale water to entire Tri-Valley**
- » **Zone 7 currently anticipates sufficient water supply through 2040**
- » **Livermore Water utility providers:**
 - California Water Service
 -  Livermore Municipal Water



Drought Conditions and Water Supply

- » **Approximately 70% of Tri-Valley water purchased through State Water Project (SWP)**
- » **In 2021, Zone 7 only received 5% of its SWP allocation due to drought conditions**
- » **Zone 7 actions to address drought:**
 - Implemented 15 percent conservation mandate in 2021
 - Accelerated projects to improve water supply reliability
 - Invested in non-local groundwater storage
 - Purchased additional water supplies for 2021
 - These actions alone will not address drought conditions; continued conservation is necessary



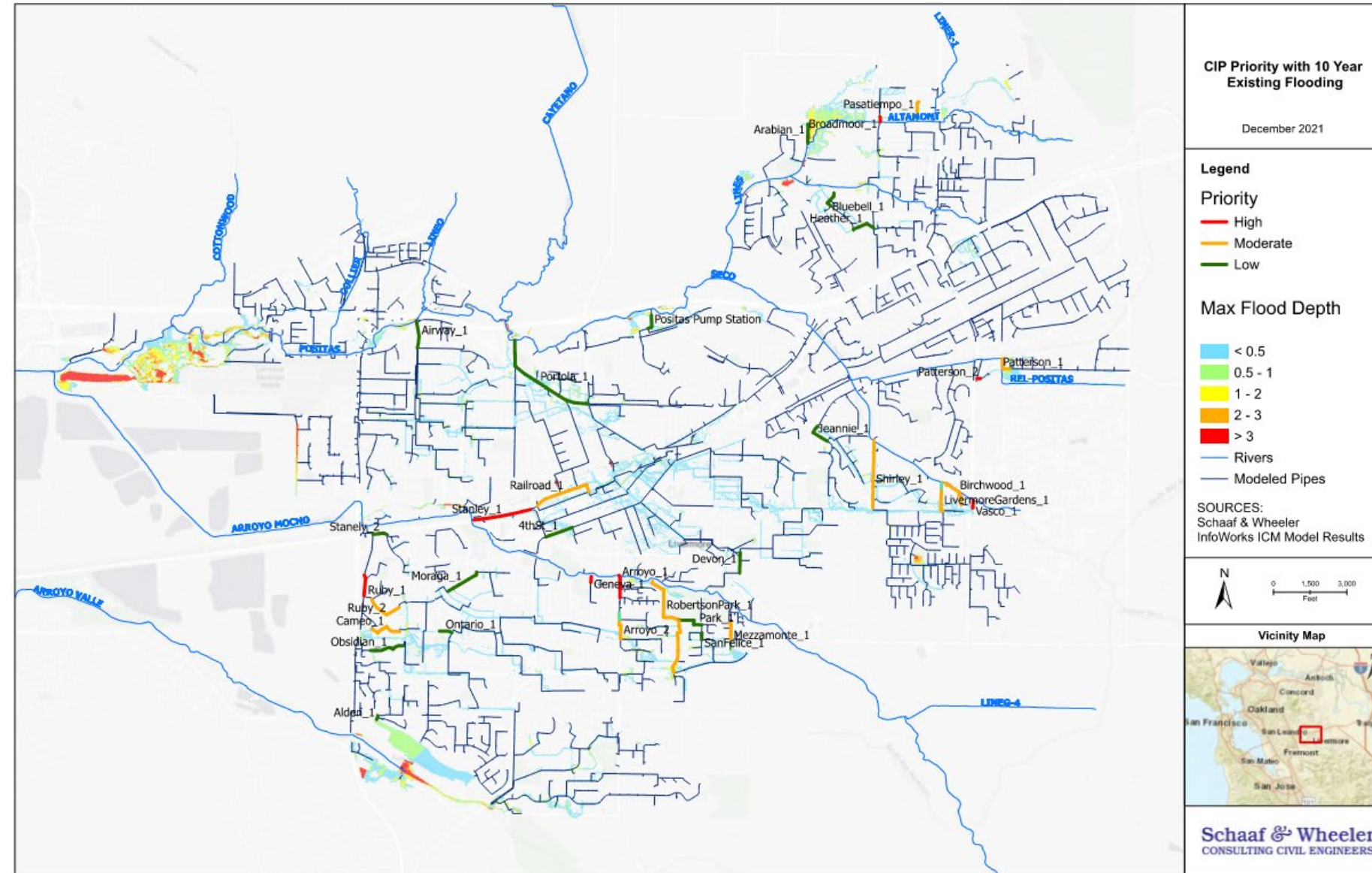
Wastewater

- » City provides wastewater collection to 30,000 sewer connections
- » Wastewater treated at Livermore Water Reclamation Plant
- » Treated wastewater routed to either:
 - Livermore Water Reclamation Plant
 - Livermore Amador Valley Water Management Agency
- » Wastewater system can accommodate existing General Plan buildout upon implementation of planned upgrades



Storm Drainage Systems

- » Storm drainage system includes 200 miles of pipeline, covering 26 square miles
- » \$21.6 million of improvements needed to address deficient storm drains



Transportation

- » **Street Maintenance**
- » **Traffic Control**
- » **Bike and Pedestrian**
- » **Roadway Projects**
- » **Regional Efforts**



Parks, Plazas and Trails

» Livermore Area Recreation and Park District (LARPD)

- Special District
- Parks and Programs

» City or LARPD?

- Shared System

- Partnership



Public Buildings

» City owns 42 buildings

- 17 Essential Facilities
- 10 General Use
- 15 Specific Use



Master Plans

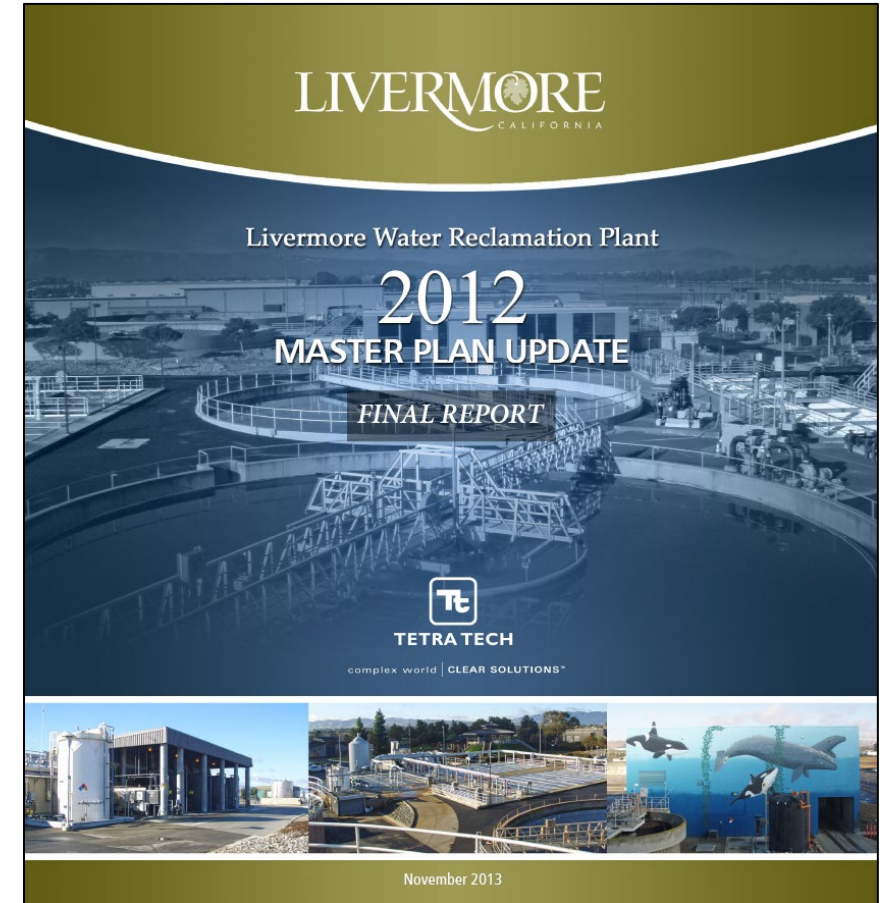
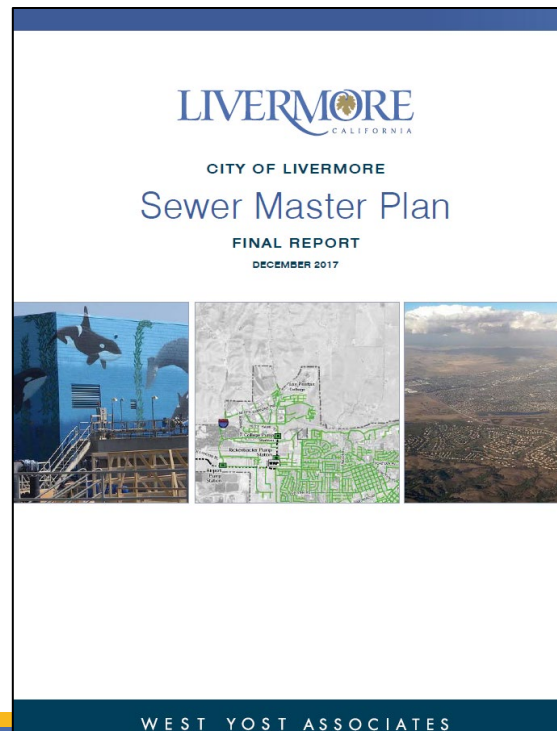
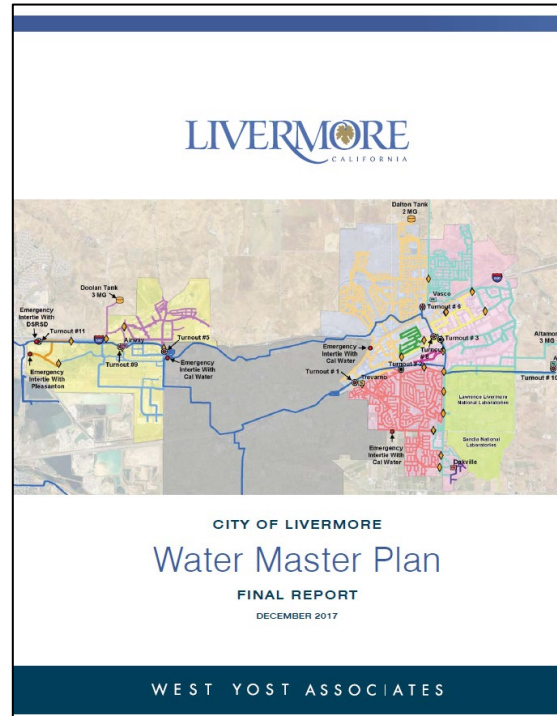
» Sewer

» Water

» Storm Drain

» Traffic

» Parks



Capital Improvement Plan

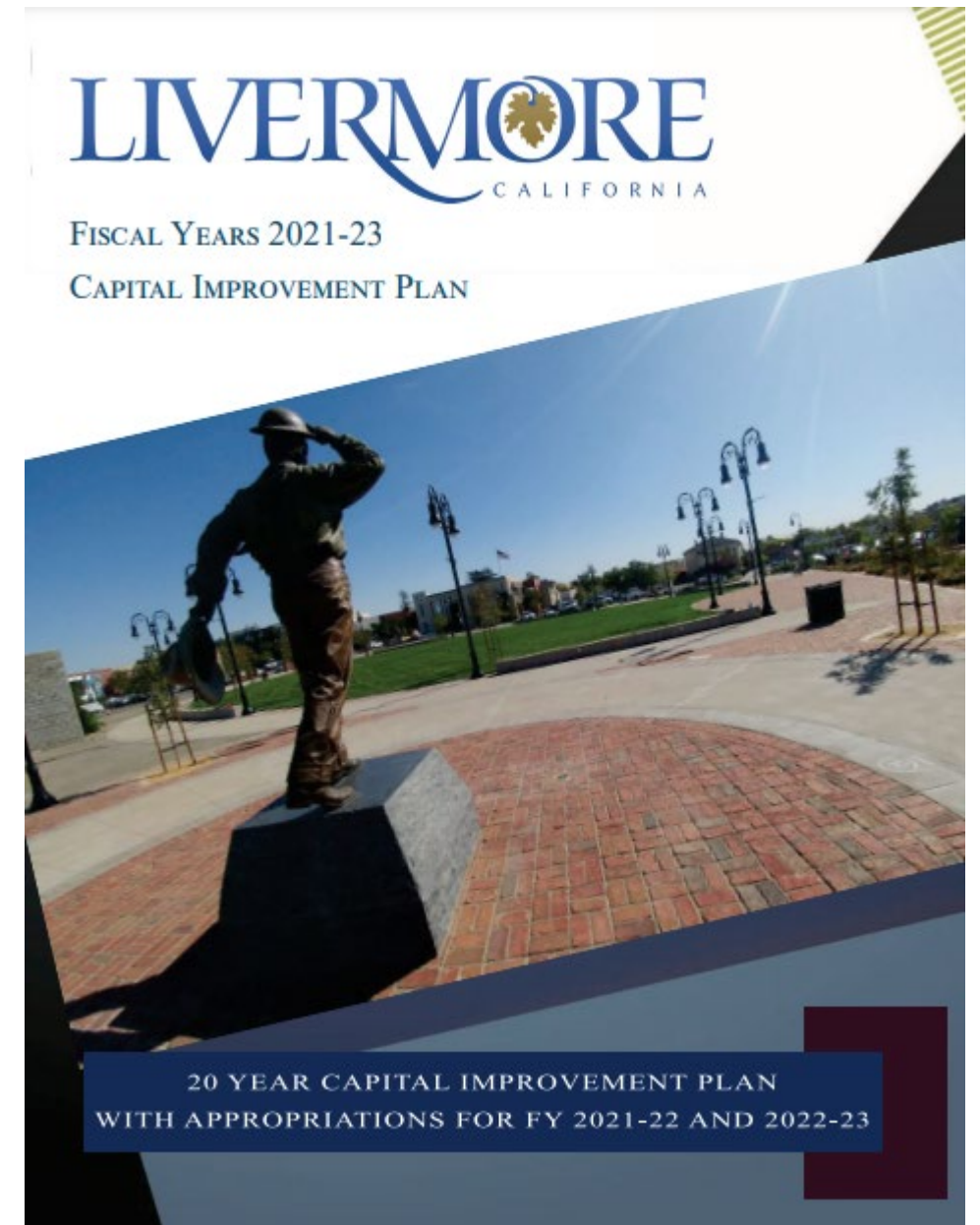
» Allocates funding to projects

- Identify projects underway
- Calculate capacity for new projects
- Estimate fund balances
- Identify potential new projects
- Estimate new project costs
- Develop project budgets by fiscal year
- Review at City Council budget workshop

» Allows Project Implementation



- Scoping, Preliminary Engineering, Environmental
- Design, Right of Way, Permitting, Construction



Public Services

» Fire Protection Services

» Police Protection Services

» Library Services



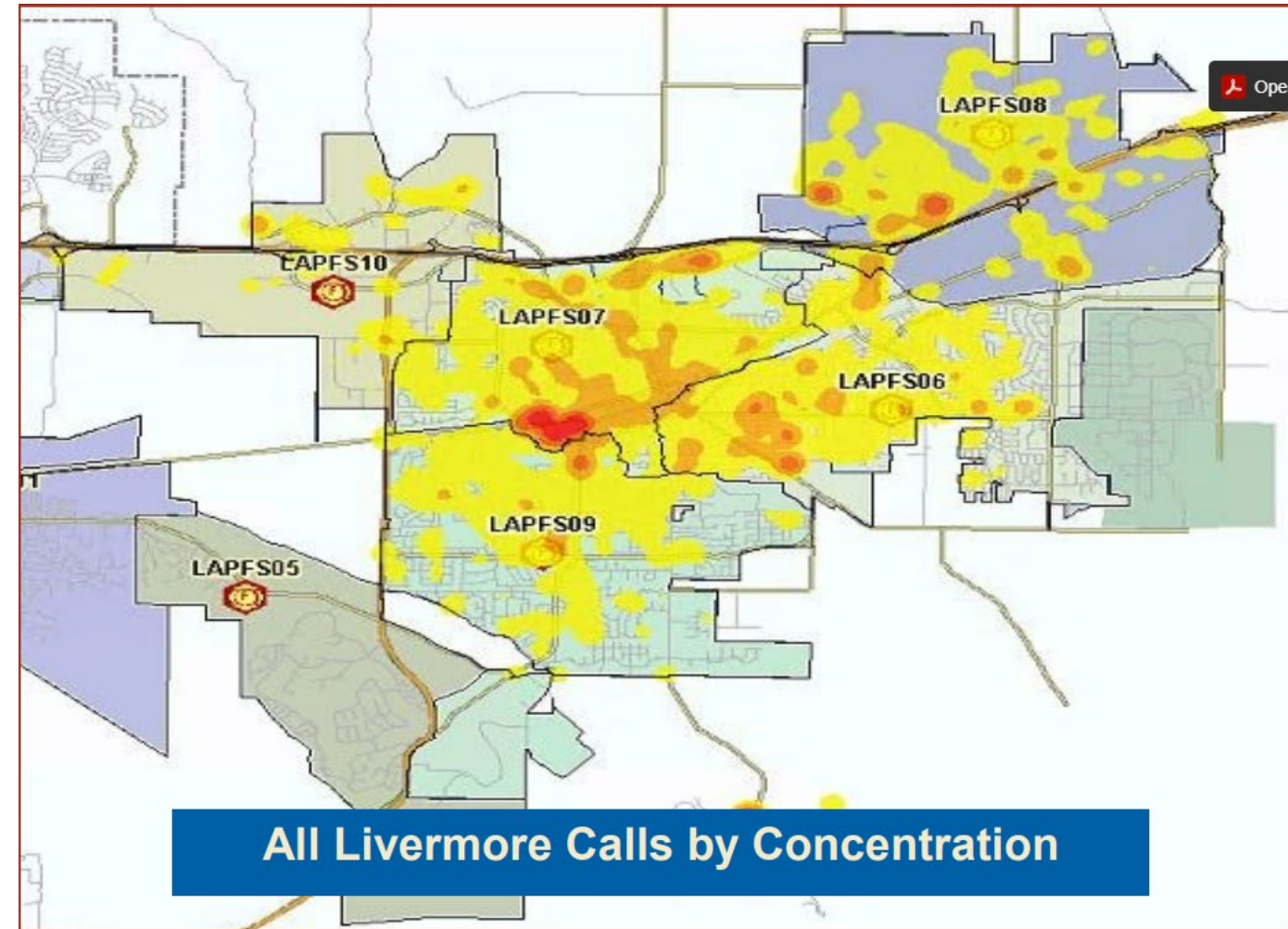
Fire Protection Services

» Livermore-Pleasanton Fire Department provides:

- Fire suppression services
- Emergency medical services
- Hazardous material response
- Natural hazard and human-caused emergency response

» Identified fire protection needs:

- Additional staffing, stations, and equipment and changes to deployment model to improve response rates



2020 Service Call Concentration (7,579 total incidents)

Police Protection Services

» **Livermore Police Department provides:**

- Traffic and street patrol and enforcement
- Criminal investigations
- Crime prevention
- School safety
- Animal control

» **Identified police protection needs:**

- Additional facilities and equipment
- Future need for additional staffing as population increases



Library Services

» Livermore Library Service Department operates:

- Civic Center Library (70 percent of total circulation)
- Rincon Library (5 percent of total circulation)
- Springtown Library (4 percent of total circulation)
- Digital library services (21 percent of total circulation)

» Identified library needs:

- Facility/Building upgrades
- Expanded Programs and Services



Next Steps

- » **Future GPAC meetings will continue to focus on key learnings to prepare for review of alternatives analysis**



Public Comments



GPAC Questions
