



# General Plan Advisory Committee

---

Thursday, December 8, 2022

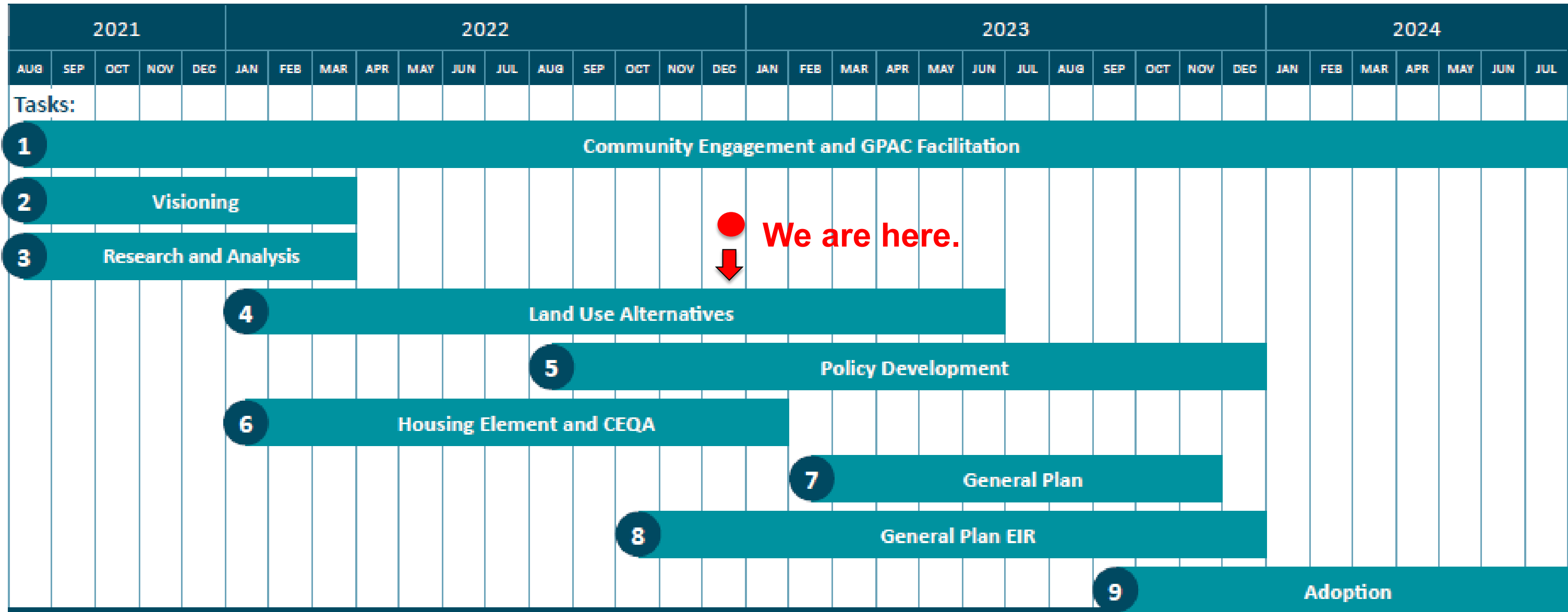
Parks and Recreation  
Public Schools

# Presentation Outline

- » **Project Overview**
- » **Parks and Recreation**
- » **Public Schools**
- » **Next Steps**
- » **Public Comments**
- » **GPAC Questions and Feedback**



# Project Overview



# General Plan Vision

**In 2045, Livermore will be a community with a big heart where families and individuals flourish, and people with diverse experiences and perspectives work together for the common good. Insightful land-use policies and wise resource management will ensure services and infrastructure for a high quality of life and enable Livermore to be safe and welcoming for all.**

CO PLACEWORKS



# General Plan Guiding Principles



## Prosperity

Excellent city services and infrastructure support a thriving local economy with a wide spectrum of local jobs including those in science and technology, arts and trades, agriculture, and tourism.



## Vibrancy

People enjoy a vibrant downtown, commercial districts, cultural venues, wineries and breweries, and parks throughout the city and surrounding areas to work, shop, dine, and have fun.



## Mobility

A wide variety of convenient, comfortable zero- emission modes of transportation and interconnecting routes enable everyone to easily travel to meet their daily needs for work, errands, and play.



## Sustainability

We live sustainably to preserve our vital resources, work to clean up our environment, protect open spaces and habitats, and integrate nature into the urban environment.



## Resiliency

We prepare for emergencies and a changing climate, help those affected, and ensure the durability of our homes, businesses, and supporting infrastructure, while maintaining sufficient financial reserves.



## Homes

Individuals and families of all types and income levels can find diverse housing choices close to jobs, exceptional schools, shopping, entertainment, and well-maintained parks.



## Equity

Everyone can easily participate in civic life and have a voice in city decisions. We enable access to services and opportunities and provide for those who have been underserved so that everyone can be healthy and flourish.



## Diversity

Neighbors feel connected to each other and their city, welcome and celebrate everyone, and respect differing viewpoints to foster a close-knit community where civic life and opportunity thrive.



## Continuity

We honor our complex heritage, which began with the indigenous peoples, who were the original stewards of this land, and followed by the increasingly diverse community that is our future.



## Arts

We foster a vibrant and thriving cultural arts community so that the arts, in all their beauty and variety, will enhance the lives of residents and visitors alike.

# Land Use Alternatives Evaluation

## » Alternatives evaluation will consider:

- Climate change and resilience
- Public safety from flooding and fires
- Equity
- Parks
- Housing supply
- Student generation and school capacity
- Infrastructure capacity
- Open space preservation and biological resources
- Historic resources
- Aesthetics and urban design
- Fiscal impacts
- Transportation impacts

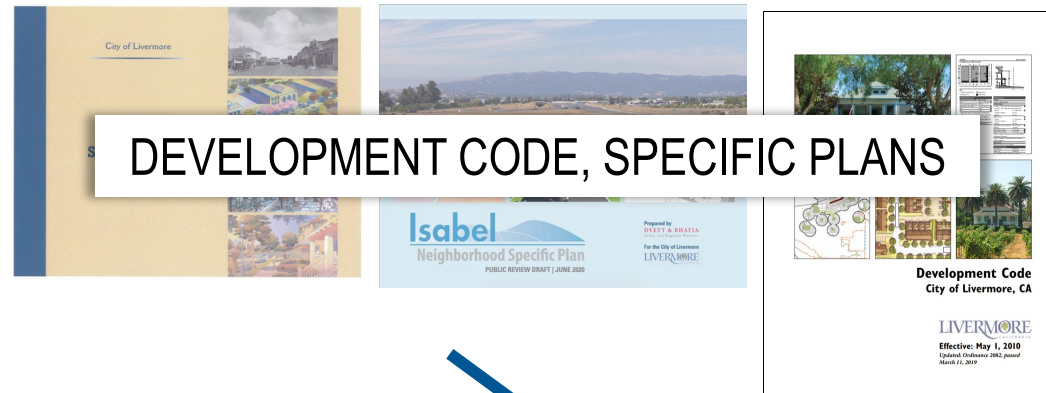
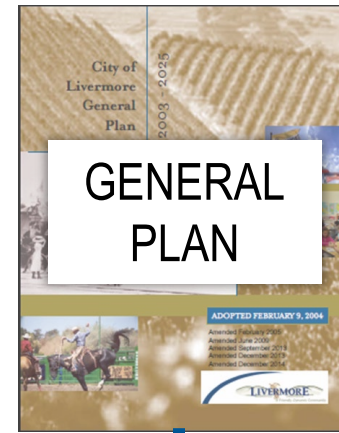
» **No decisions on a preferred land use scenario will be made until evaluation is complete and shared with community**



# General Plan Elements

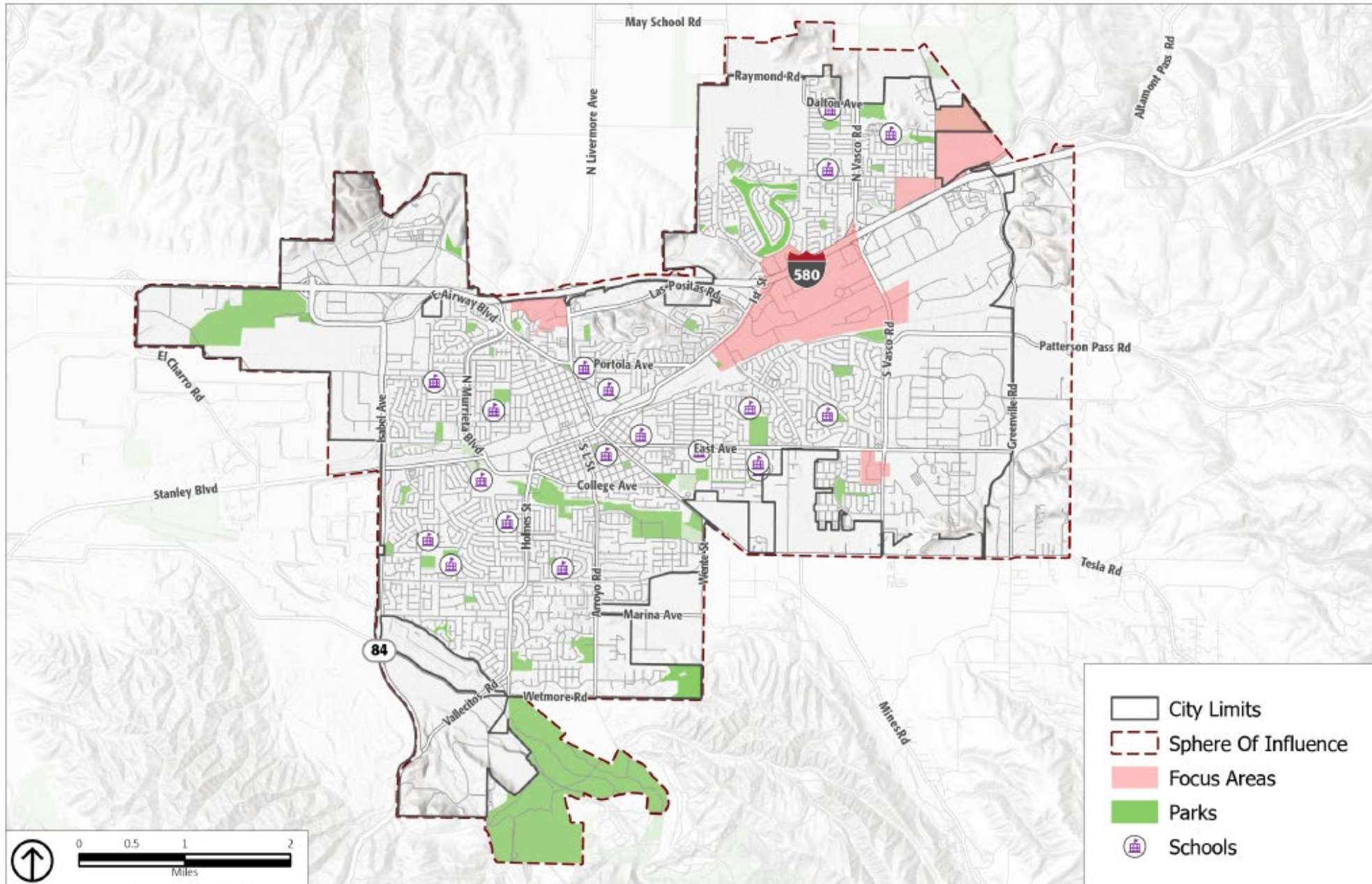
- » Land Use
- » Circulation
- » Housing
- » Open Space and Conservation
- » Noise
- » Public Safety
- » Environmental Justice
- » Community Character
- » Infrastructure and Public Services
- » Economic Development
- » Climate Change

# Hierarchy of City Policy Documents





# Parks and Schools in Livermore



Source: City of Livermore. 2021: Esri. 2021: PlaceWorks. 2022





# Role of City in Park and School Planning

- » **Designate sufficient land for park and school uses**
- » **Plan for necessary infrastructure**
  - Water/wastewater
  - Roadway improvements
- » **Share information about projected growth**





# Parks and Recreation

» Parks and recreation services managed by Livermore Area Recreation and Park District (LARPD)

» LARPD service area includes:

- 27 Neighborhood Parks (153 acres)
- 3 Community Parks (152 acres)
- 20 Special Use Parks/ Facilities (199 acres)
  - Includes 8 multi-use recreation trails (over 31 miles)
- 5 Open Space areas (1,444 acres)

» Administers 50+ recreational programs



# LARPD Park Land Acreage Standard

## » LARPD strives to provide:

- 2 acres of neighborhood parks per 1,000 residents
- 2 acres of community parks per 1,000 residents
- 2 acres of special use facilities per 1,000 residents

## » As of 2015, LARPD identified the following deficits based on these standards:

- -32 acres of neighborhood parks
- -33 acres of community parks





# Existing Park Needs

## » Top 5 Facility Needs

- Sports Fields
- Sports Complex, lighted with synthetic turf
- Trails, multi-use for jogging, walking, hiking, equestrian, bicycling
- Lighted Sports Fields
- Restrooms in Parks

## » Program Needs

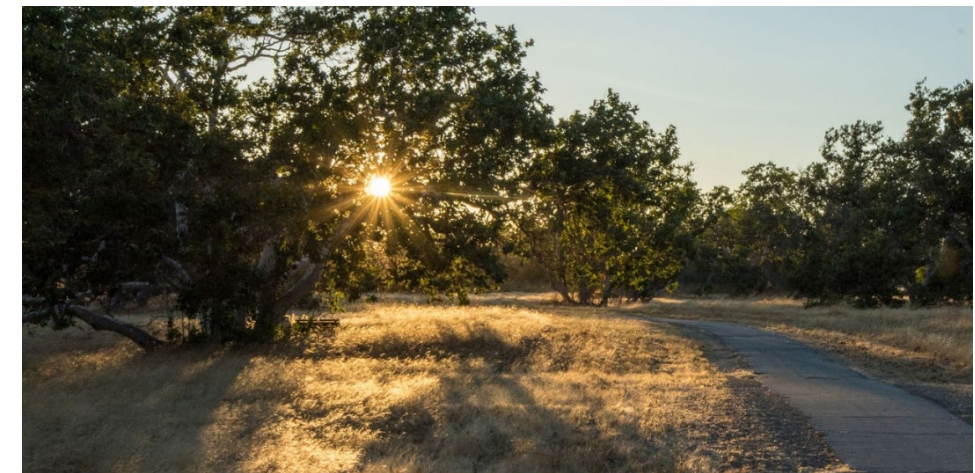
- Arts and crafts, science and nature, and personal development programs
- Senior programs
- Youth programs
- Programs for differently abled individuals





# Planned Park Improvements

- » **Bicycle Pump Track at Sunken Gardens**
- » **T6 Trail Connector to North Livermore**
- » **Sycamore Grove Restroom at Veterans Park**
- » **Amphitheatre at Veterans Park for Programs**
- » **Shade Structures**
- » **Replacement of playgrounds in older parks**
- » **Arroyo Road Trail connector through Sycamore Grove**



# GPAC Questions

---

# Public Schools

## » Livermore Valley Joint Unified School District (LVJUSD)

- Serves more than 13,000 students
- 9 elementary schools
- 2 k-8 schools
- 3 Middle Schools
- 4 high schools (2 comprehensive and 2 alternative)

## » Operating within existing capacity, but three schools are at 90 percent capacity

- Joe Mitchell (K-8)
- Rancho Las Positas Elementary
- Sunset Elementary



# Upcoming School Improvement Projects

- » **Nearing completion of \$245 million in bond projects approved by voters in 2016**
- » **Renovations planned for Marilyn Avenue**
- » **A variety of smaller projects funded through developer fees**
- » **Additional progress on the Facility Master Plan will require larger revenues sources**



# Planning for Future Schools

- » **Where is student growth expected?**
- » **How much growth and at what grade levels?**
- » **Do we have room for additional students within neighborhood schools?**
- » **If not, what is the cost to expand vs cost to build new facilities?**
- » **Unused property exists in Isabel plan area.**





# GPAC Questions

---

# Next Steps

## » **Future GPAC meetings will:**

- Continue to focus on key learnings to prepare for review of alternatives analysis
  - Cultural and Historic Resources
  - Biologic Resources
  - South Livermore Valley / Tourism Economy
- Begin to explore policy framework, themes, and topics



---

# Public Comments

---



# GPAC Questions

---