



General Plan Advisory Committee

Wednesday, January 11, 2023

Biological Resources Cultural and Historic Resources

Presentation Outline

- » **Project Overview**
- » **Biological Resources**
- » **Cultural and Historic Resources**
- » **Public Comments**
- » **GPAC Questions and Feedback**



Project Overview

» Completed tasks:

- Visioning
- Research and Analysis

» Current tasks:

- Land Use Alternatives
- Housing Element Update

» Upcoming tasks:

- Policy Development
- Draft General Plan
- General Plan EIR



General Plan Vision

In 2045, Livermore will be a community with a big heart where families and individuals flourish, and people with diverse experiences and perspectives work together for the common good. Insightful land-use policies and wise resource management will ensure services and infrastructure for a high quality of life and enable Livermore to be safe and welcoming for all.

CO PLACEWORKS

General Plan Guiding Principles



Prosperity

Excellent city services and infrastructure support a thriving local economy with a wide spectrum of local jobs including those in science and technology, arts and trades, agriculture, and tourism.



Vibrancy

People enjoy a vibrant downtown, commercial districts, cultural venues, wineries and breweries, and parks throughout the city and surrounding areas to work, shop, dine, and have fun.



Mobility

A wide variety of convenient, comfortable zero-emission modes of transportation and interconnecting routes enable everyone to easily travel to meet their daily needs for work, errands, and play.



Sustainability

We live sustainably to preserve our vital resources, work to clean up our environment, protect open spaces and habitats, and integrate nature into the urban environment.



Resiliency

We prepare for emergencies and a changing climate, help those affected, and ensure the durability of our homes, businesses, and supporting infrastructure, while maintaining sufficient financial reserves.



Homes

Individuals and families of all types and income levels can find diverse housing choices close to jobs, exceptional schools, shopping, entertainment, and well-maintained parks.



Equity

Everyone can easily participate in civic life and have a voice in city decisions. We enable access to services and opportunities and provide for those who have been underserved so that everyone can be healthy and flourish.



Diversity

Neighbors feel connected to each other and their city, welcome and celebrate everyone, and respect differing viewpoints to foster a close-knit community where civic life and opportunity thrive.



Continuity

We honor our complex heritage, which began with the indigenous peoples, who were the original stewards of this land, and followed by the increasingly diverse community that is our future.



Arts

We foster a vibrant and thriving cultural arts community so that the arts, in all their beauty and variety, will enhance the lives of residents and visitors alike.

Land Use Alternatives Evaluation

» Alternatives evaluation will consider:

- Climate change and resilience
- Public safety from flooding and fires
- Equity
- Parks
- Housing supply
- Student generation and school capacity
- Infrastructure capacity
- Open space preservation and biological resources
- Historic resources
- Aesthetics and urban design
- Fiscal impacts
- Transportation impacts

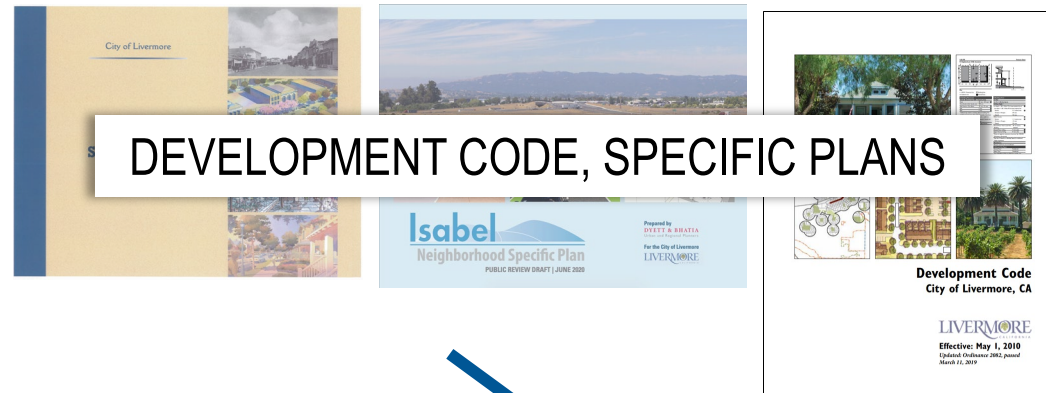
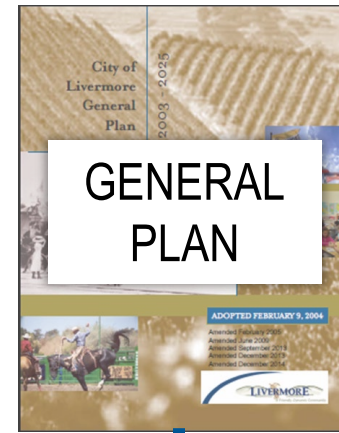
» **No decisions on a preferred land use scenario will be made until evaluation is complete and shared with community**



General Plan Elements

- » Land Use
- » Circulation
- » Housing
- » Open Space and Conservation
- » Noise
- » Public Safety
- » Environmental Justice
- » Community Character
- » Infrastructure and Public Services
- » Economic Development
- » Climate Change

Hierarchy of City Policy Documents




Biological Resources

Biological Resources Regulatory Framework

» Federal Regulations

- Endangered Species Act (ESA)
- Clean Water Act
- Migratory Bird Treaty Act

» State Regulations

- California Endangered Species Act
- California Environmental Quality Act
- Porter-Cologne Water Quality Control Act
-  California Fish and Game Code
- California Native Plant Protection Act
- Sensitive Natural Communities

» Regional Planning Documents

- East Alameda County Conservation Strategy
- Regional Conservation Investment Strategies

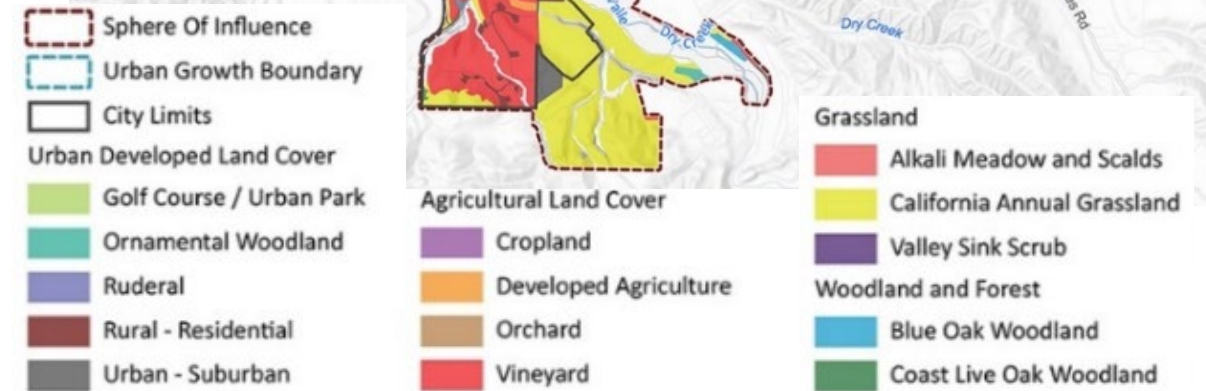
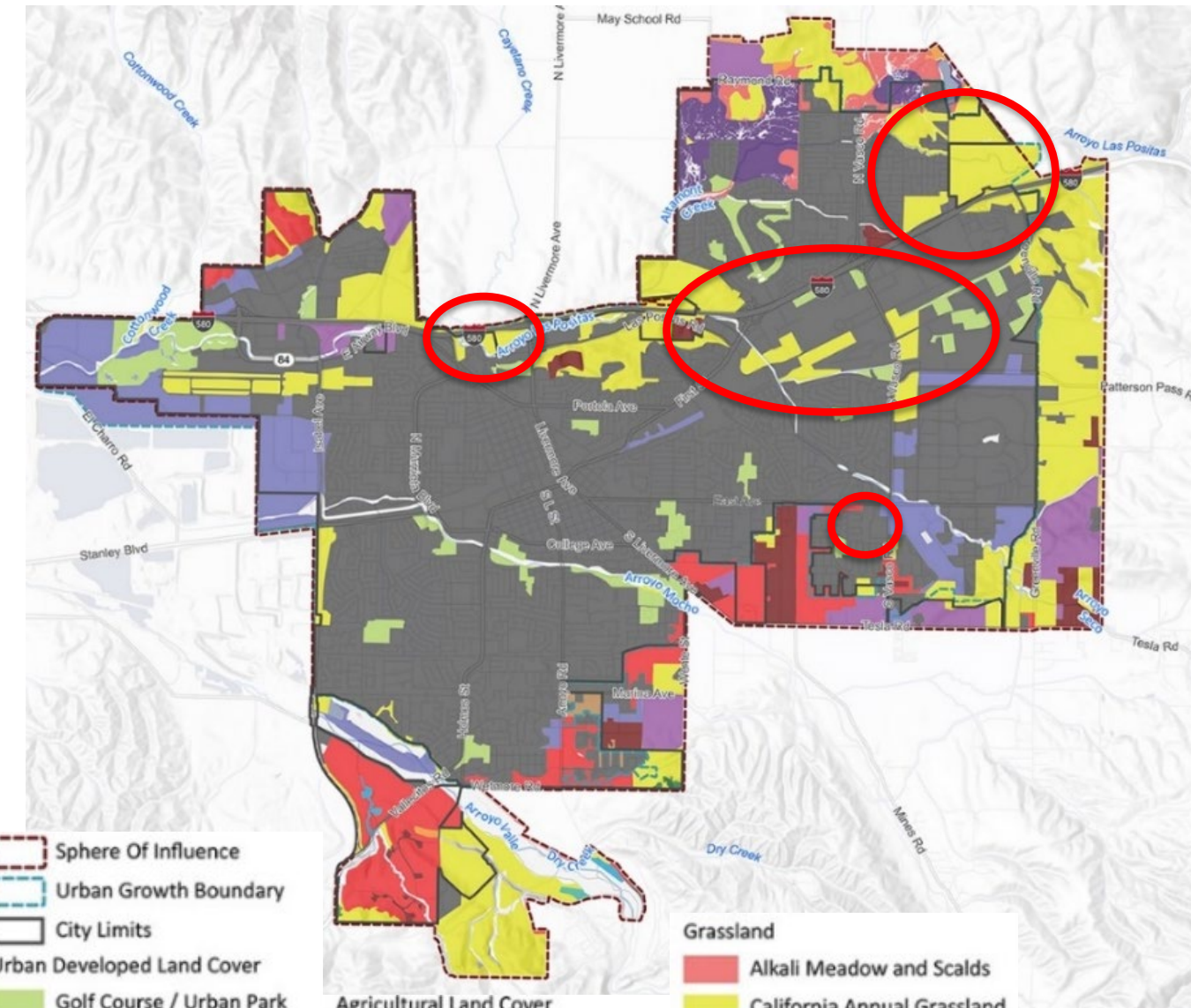
» Local Regulations

- Livermore 2003-2025 General Plan
- Livermore Municipal Code

Vegetation Communities

» Vegetation communities within the Sphere of Influence

- 70% - Urban developed areas
- 21% - Grassland
- 9% - Agriculture
- 0.2% - Woodland and forest



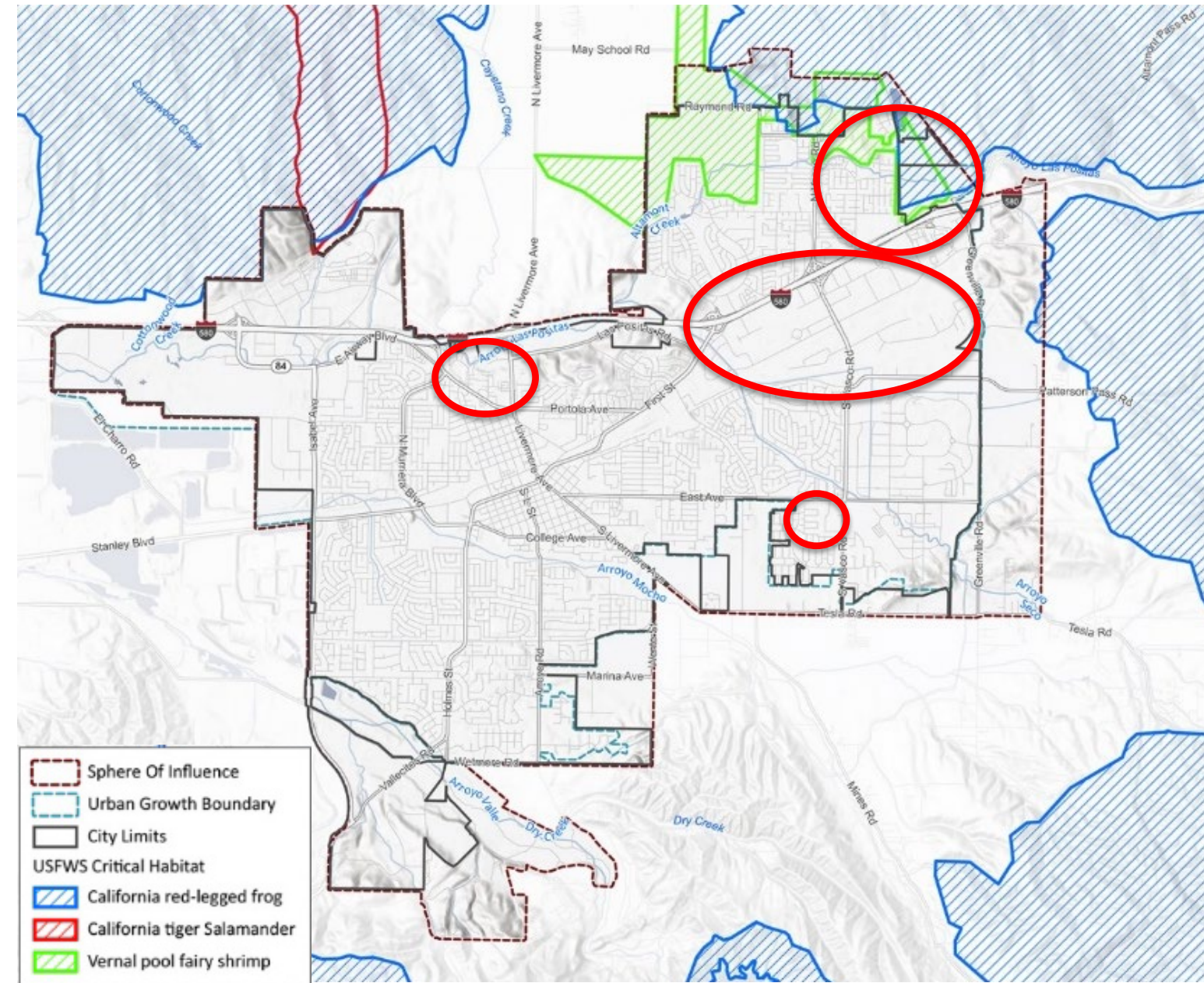
Special Status Plant and Wildlife Species

- » **Plants and animals that are legally protected under:**
 - Federal Endangered Species Act (ESA)
 - California Endangered Species Act (CESA)
 - Other regulations
- » **Special status species represent major constraints to development**
- » **Special status species in and around Livermore:**
 - 23 special-status plant species
 - 41 special-status animal species
- » **Focused surveys would be required to confirm presence**



Critical Habitat

- » **ESA requires identification of critical habitat**
- » **Critical habitat in/near Livermore**
 - California red-legged frog
 - California tiger salamander
 - Vernal pool fairy shrimp
- » **Protection of critical habitat only applies to actions carried out by federal agencies**



Questions?


Cultural and Historic Resources

Historic Resources Regulatory Framework

» Federal Regulations

- National Historic Preservation Act
- National Register of Historic Places
- Certified Local Government Program

» State Regulations

- California Register of Historical Resources
- California Environmental Quality Act
- Public Resources Code Section 5097
-  Health and Safety Code Sections 7050.5 and 7052
- Senate Bill 18
- Assembly Bill 52

» Local Regulations

- Livermore 2003-2025 General Plan
- Livermore Municipal Code
- Livermore Development Code

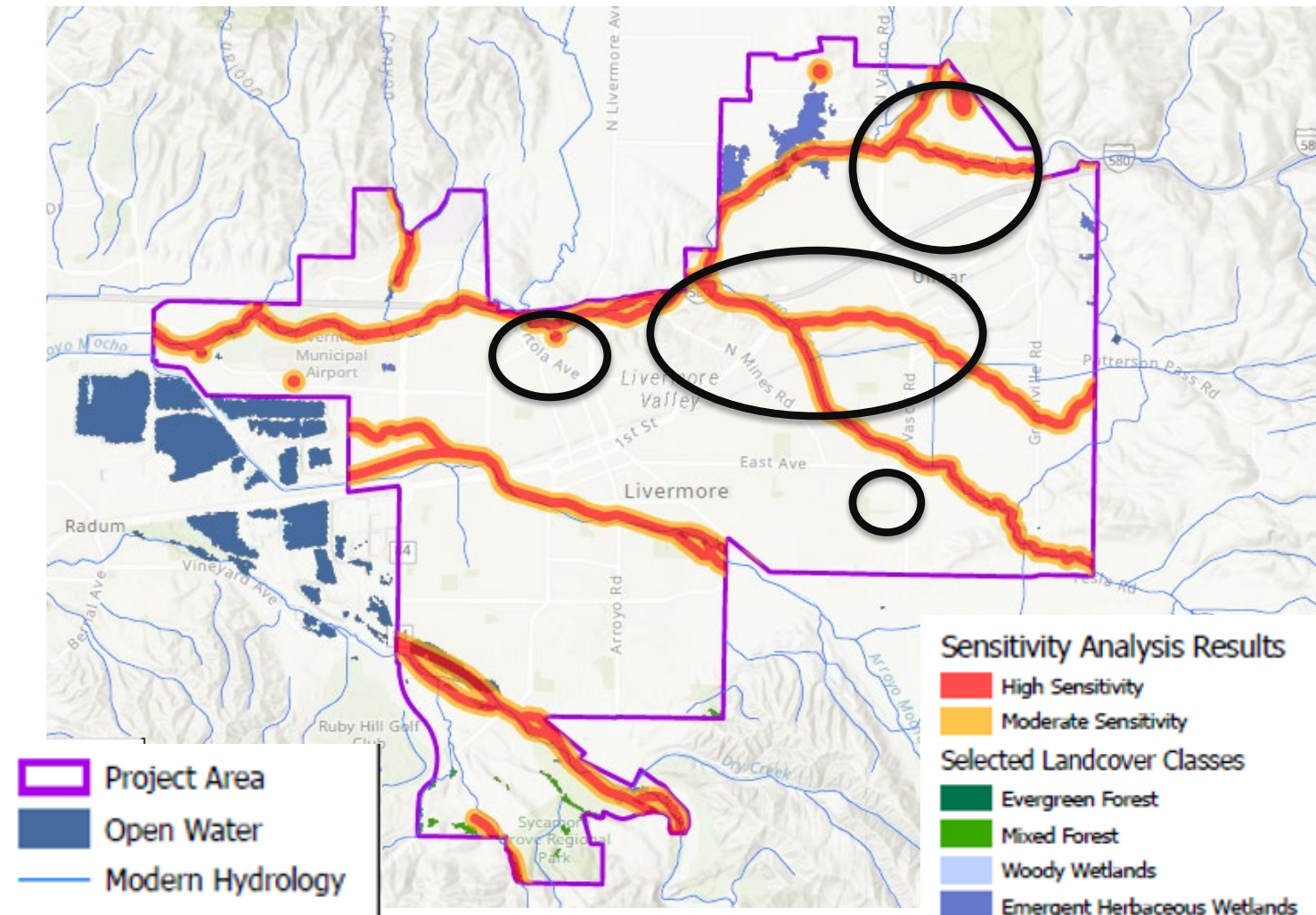
Cultural Resources

- » Original inhabitants were the Chocheño Costanoan-speaking Pelnen people
- » Tribes still present in Alameda County
- » 13 archaeological resources found in Livermore

- Lithic scatter
- Burial site
- Stone tools
- Fire cracked rocks

- » **Areas more likely to have cultural resources:**

- Proximity to water
- Proximity to known sites



Historic Resources Federal Definition

- » Needs to be at least 50 years old, with limited exceptions
- » Needs to be related to one significant criteria
 - Person
 - Event
 - Architecture
 - Information
- » Maintain Integrity



Livermore Historic Resources Guidance

- » **Historic Context Statement**
- » **Historic Resources Inventory**
- » **Historic Preservation Ordinance**



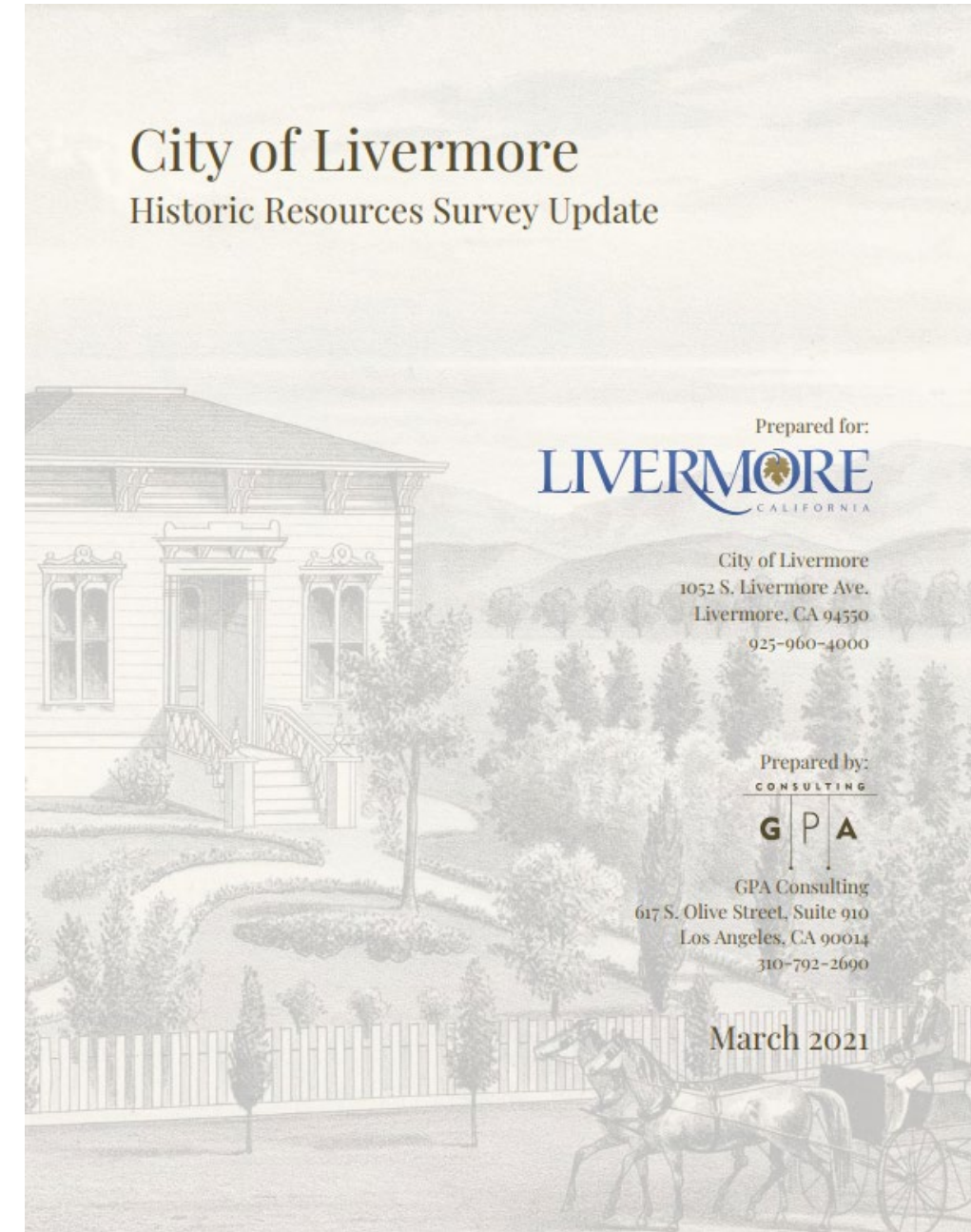
Historic Resources in Livermore

» Livermore historic resources on National and/or California Registers

- Bank of Italy Building
- Carnegie Library
- DJ Murphy House
- Hagemann Ranch
- Ravenswood
- Wente Brothers Winery
- Kalthoff Vineyards
- Gandolfo Ranch

» 2021 Historic Resources Survey identified

- ~70 historical resources
- ~220 potential historical resources



Questions?

Public Comments





General Plan Advisory Committee

Wednesday, January 11, 2023

Goals, Objectives, Policies, and Actions

Presentation Outline

- » **Goals, Objectives, Policies, and Actions**
- » **Next Steps**
- » **Public Comments**
- » **GPAC Questions and Feedback**



What is a Goal, Objective, Policy and Action?

- » A goal is a description of the general desired result.
- » An objective is a specific condition or end that serves as a concrete step toward attaining a goal.
- » A policy is a specific statement that guides decision-making in working to achieve an objective.
- » An action is a program, implementation measure, procedure, or technique intended to help to achieve a specified objective.



Goal, Objective, Policy, Action Example

» Goal OSC-7 Minimize Livermore's energy consumption.

- Objective OSC-7.1 Promote a variety of approaches to energy conservation in the public and private realms.
 - Policy 1: The City shall promote the construction of energy-producing wind turbines in the vicinity of Livermore.
 - Policy 2: The City shall approve only those development proposals which are designed and located to minimize energy consumption and adverse impacts on air, land, and water resources.
 - Action 1: Create and use incentives to encourage commercial, residential, and industrial energy users to install on-site alternative energy sources, such as photovoltaic (PV) cells.
 - Action 2: Where appropriate, replace City-owned vehicles with alternatively-fueled or hybrid vehicles.



GPU Team Policy Development Process

- » **Review existing General Plan goals, objectives, polices, and actions**
 - Identify outdated policy direction
 - Respond to new issues and State requirements
- » **Prepare new and revised goals, policies, and actions**
- » **Collect input and direction on draft goals, policies, and actions**
 - GPAC
 - Planning Commission
 - City Council



February 8, 2023 GPAC Meeting

» Meeting objectives

- Familiarize the GPAC with the topics and level of detail in the General Plan
- Collect GPAC input on new topics the General Plan Update should address



February 8, 2023 GPAC Meeting

» **Be prepared to discuss:**

- What strikes you about how the General Plan is organized and written?
- What topics does your Element cover?
- Are there topics in your Element that are outdated and don't need to be carried forward?
- Are there new issues that have emerged that should be included in the updated Element?

» **Think about your own experiences and the community's key issues to answer these questions**

» **General Plan team will ensure General Plan Update reflects State requirements**



General Plan Review Discussion Format

- » **Brief presentation from General Plan team**
- » **Small group discussion**
- » **Reports back to entire GPAC**
- » **Questions and answer**
- » **Public comment**
- » **GPAC discussion**

General Plan Element Selection

» Each GPAC member to select a set of Elements to review:

- Land Use and Economic Development
- Community Character and Open Space and Conservation
- Circulation and Noise
- Infrastructure and Public Services, Public Safety and Climate Change

» 4 to 5 GPAC members per set of elements



Questions?

Next Steps

- » **Future GPAC meetings will continue to focus on key learnings to prepare for review of alternatives analysis**



Public Comments



GPAC Questions
